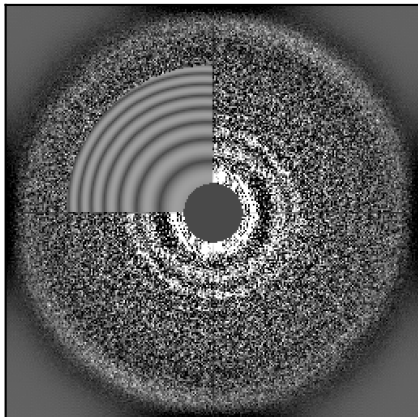


CTFFIND report

CTFFIND power montage



Estimated defocus values : 14980.29 , 12906.65 Angstroms
Estimated azimuth of astigmatism: -62.49 degrees
Score : 0.18121
Thon rings with good fit up to : 4.5 Angstroms

Micrographs
Diagnostic plot pattern
Spring database option
Spring.db file
Continue spring.db option
Spherical aberration
Electron voltage in kV
Amplitude contrast
Pixel size in Angstrom
Range of defocus in Angstrom
Defocus search step size
Astigmatism search restraint in Angstrom
Tile size power spectrum in Angstrom
Resolution search range in Angstrom
CTFFILT refine option
Local defocus search range
Expected tilt and tilt search range in degrees
Binning option
Binning factor
MPI option
Number of CPUs
Temporary directory
Fri, 01 Apr 2022 17:11:42 (PID=11359)

= tutorial/Small TMV data set/TMV_Krios_FalconII_004.mrc
= micdetermine_diag.pdf
= False
= spring.db
= False
= 2.7
= 300
= 0.1
= 1.065
= (10000, 45000)
= 300
= 2000
= 600
= (30.0, 6.0)
= False
= 3000
= (0, 8)
= True
= 2
= 2
= 2
= /tmp
Printed to micdetermine_diag_TMV_Krios_FalconII_001.pdf